

# COLUMBIA FALLS ACE HARDWARE

1947 9TH STREET WEST  
COLUMBIA FALLS, MONTANA 59912



**ARCHITECTURAL**  
HGFA-ARCHITECTS  
800 GRANITE TOWER  
222 NORTH 32ND STREET  
BILLINGS, MONTANA 59101  
406.248.7811



**GENERAL CONTRACTOR**  
MARKOVICH CONSTRUCTION  
2827 LEXINGTON AVENUE  
BUTTE, MONTANA 59701  
406.494.3901



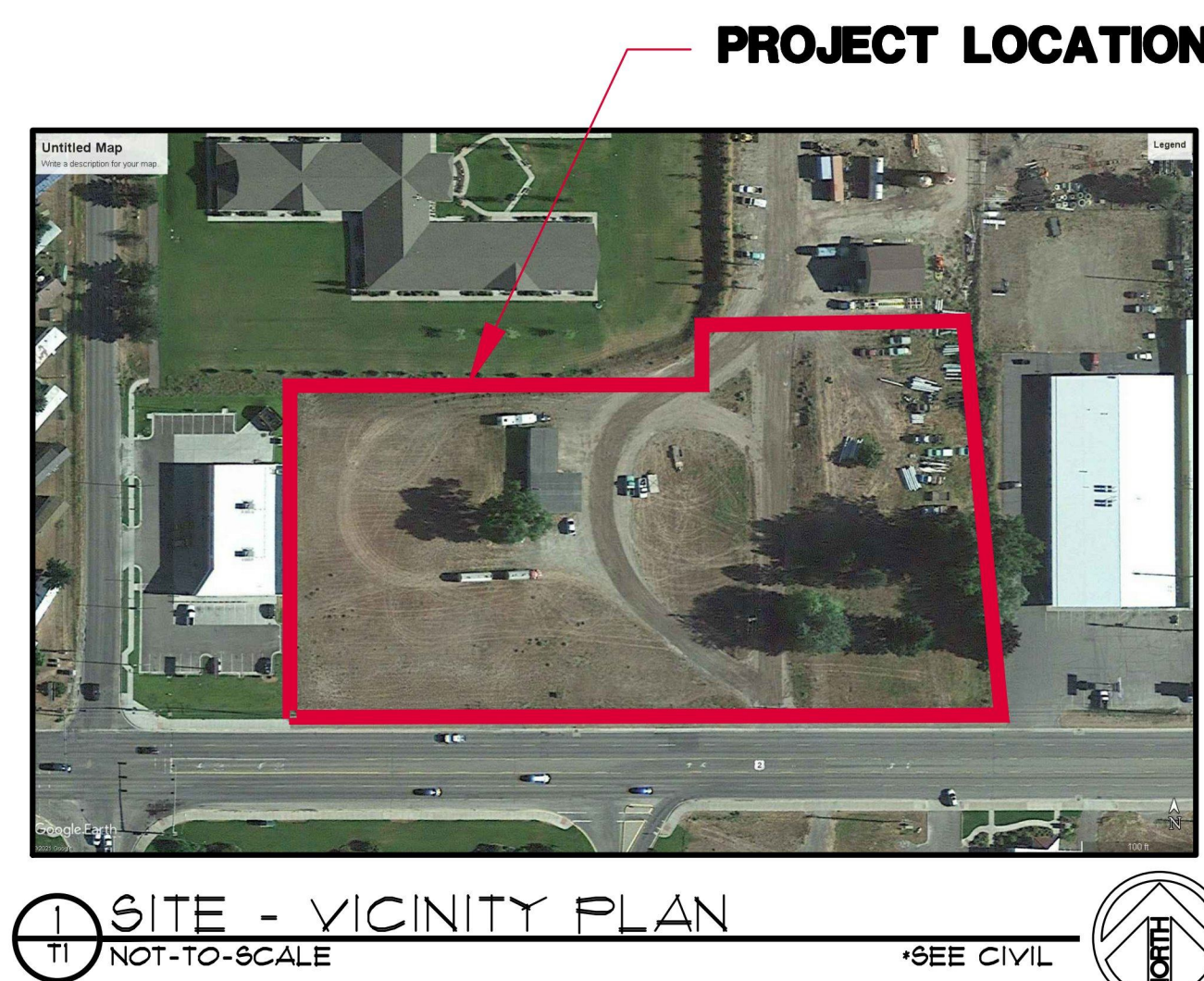
**STRUCTURAL**  
KRIVONEN & ASSOCIATES  
1004 DIVISION STREET  
BILLINGS, MONTANA 59101  
406.259.1184



**MECHANICAL-ELECTRICAL**  
CON'EER ENGINEERING, INC.  
1629 AVENUE D, SUITE 7C  
BILLINGS, MONTANA 59102  
406.252.3237



**LANDSCAPE**  
SECOND NATURE CONSULTING  
1432 TETON AVENUE  
BILLINGS, MONTANA 59102  
406.850.0461



1 SITE - VICINITY PLAN  
NOT-TO-SCALE SEE CIVIL

## DRAWING INDEX

TITLE	T1 - TITLE & CODE INFORMATION	A8.1 - DOOR AND WINDOW SCHEDULES
<b>CIVIL</b>	V001 TOPOGRAPHY V002 BOUNDARY/ EASEMENTS V003 DETAIL NOTES/ CERTIFICATION C001 NOTES, LEGEND AND HORIZONTAL CONTROL C002 DISOLUTION PLAN C100 OVERALL SITE PLAN C101 ENLARGED SITE PLAN C102 ENLARGED SITE PLAN C103 ENLARGED SITE PLAN C200 OVERALL GRADING AND DRAINAGE PLAN C201 ENLARGED GRADING AND DRAINAGE PLAN C202 ENLARGED GRADING AND DRAINAGE PLAN C203 ENLARGED GRADING AND DRAINAGE PLAN C204 STORM DRAIN PLAN & PROFILE C205 STORM DRAIN PLAN & PROFILE C300 UTILITY PLAN C301 SANITARY SEWER PLAN & PROFILE C400 CIVIL DETAILS C401 CIVIL DETAILS C402 CIVIL DETAILS C403 MONTANA DEPARTMENT OF TRANSPORTATION DETAILS C404 UTILITY DETAILS C405 UTILITY DETAILS	A8.2 - ROOM FINISH SCHEDULE A8.3 - DOOR HARDWARE SCHEDULE A8.1 - TRASH ENCLOSURE PLAN & DETAILS
<b>LANDSCAPE</b>	L11 - LANDSCAPE PLAN L12 - LANDSCAPE PLAN L21 - IRRIGATION PLAN L22 - IRRIGATION PLAN L31 - LANDSCAPE & IRRIGATION DETAILS	<b>STRUCTURAL</b> S11 - FOUNDATION PLAN S12 - FRAMING PLAN - CANOPY ENTRY S2.1 - SECTIONS & DETAILS S2.2 - SECTIONS & DETAILS S2.3 - SECTIONS & DETAILS S2.4 - SECTIONS & DETAILS
<b>ARCHITECTURAL</b>	A11 - DIMENSION FLOOR PLAN A12 - OVERALL FLOOR PLAN A13 - GONDOLA/RACKING PLAN A2.1 - REFLECTED CEILING PLAN A3.1 - ROOF PLAN A4.1 - EXTERIOR ELEVATIONS A5.1 - BUILDING SECTIONS A6.1 - WALL SECTIONS A6.2 - WALL SECTIONS A6.3 - DETAILS A6.4 - DETAILS A7.1 - INTERIOR ELEVATIONS A7.2 - INTERIOR ELEVATIONS	<b>MECHANICAL / ELECTRICAL</b> M1.1 - FLOOR PLAN - PLUMBING M2.1 - FLOOR PLAN - HVAC M3.1 - LEGEND, SPECIFICATIONS AND SCHEDULES M3.2 - SCHEDULES AND DETAILS M3.3 - DETAILS E1.1 - FLOOR PLAN - POWER E2.1 - FLOOR PLAN - LIGHTING E3.1 - LEGEND, SPECIFICATIONS AND SCHEDULES E3.2 - SCHEDULES E3.3 - DETAILS

## BUILDING INFORMATION

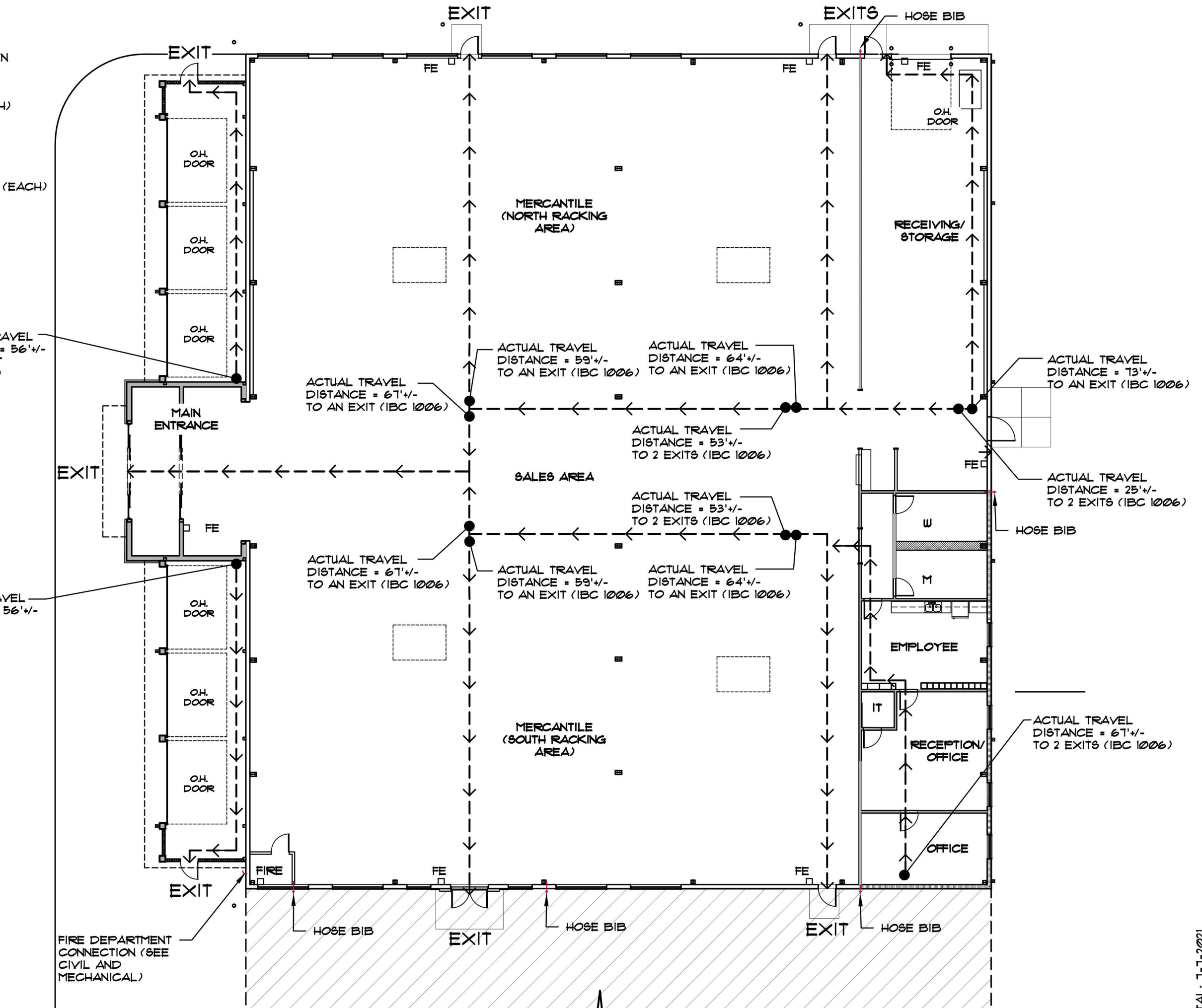
- ZONED CB-2, GENERAL BUSINESS
- GROUP M1 OCCUPANCY
- TYPE V-B CONSTRUCTION
- AUTOMATIC SPRINKLER SYSTEM TO BE INSTALLED THROUGHOUT THE BUILDING, PER IBC, IFC AND NFPA 13.
- NO HIGH FILE STORAGE TO OCCUR WITHIN THIS BUILDING. THERE WILL BE NO STORAGE OF MATERIALS WHERE THE TOP OF STORAGE IS GREATER THAN 12'-0" IN HEIGHT. VERIFY WITH OWNER.
- FE = FIRE EXTINGUISHER
- TRAVEL DIRECTION ARROWS SHOWN ON THE SCHEMATIC FLOOR PLAN ARE SHOWING TRAVEL TOWARD THE MAIN ENTRANCE OR NEAREST EGRESS. DIRECTION OF TRAVEL MAY ACTUALLY OCCUR IN BOTH DIRECTIONS.
- SEE CIVIL DRAWINGS FOR CODE REQUIRED ACCESS TO THE PUBLIC WAY.

## CODE INFORMATION

**NEW CONSTRUCTION**  
CODE: IBC 2018  
OCCUPANCY CLASSIFICATION: (IBC 309) GROUP M1 OCCUPANCY  
TYPE OF CONSTRUCTION: (IBC 602.5) TYPE V-B CONSTRUCTION  
ALLOWABLE HEIGHTS & BUILDING AREA: (TABLE 504.3, 504.4, 506.2, & IBC 506.2.1)  
HEIGHTS: 2 STOREYS; AREAS: 40,500 SF  
BUILDING AREA MODIFICATIONS: (IBC 506.2.1)  
FIRE-RESISTANCE RATING REQUIREMENTS: (TABLE 601 & 602)  
EXTERIOR WALLS - PARAPETS: (IBC 105.11)  
AUTOMATIC SPRINKLER SYSTEMS: (IBC 903.2.1)  
AUTOMATIC SPRINKLER SYSTEMS - HIGH PILED STORAGE: (IBC 903.2.1.1)  
AUTOMATIC SPRINKLER SYSTEMS - INSTALLATION REQUIREMENTS: (IBC 903.3)  
PORTABLE FIRE EXTINGUISHERS: (IBC 906)  
FIRE ALARM AND DETECTION SYSTEMS: (IBC 9012.1)

OCCUPANT LOAD: (TABLE 1004.5)  
MEANS OF EGRESS SIZING: (IBC 1009.3)  
COMMON PATH OF EGRESS TRAVEL: (TABLE 1006.2.1)  
TWO EXITS OR EXIT ACCESS DOORWAYS: (IBC 1007)  
EXIT ACCESS TRAVEL DISTANCE: (TABLE 1012)  
AISLE IN GROUP B AND M: (IBC 1018.3)  
AISLE ACCESSWAY IN GROUP M: (IBC 1018.4)  
CORRIDOR FIRE-RESISTANCE RATING: (TABLE 1018.1)  
CORRIDOR - DEAD ENDS: (IBC 1018.4)  
ROOF COVERING CLASSIFICATIONS: (TABLE 1505.1)

MINIMUM NUMBER OF PLUMBING FACILITIES: (ARM 24.301.1391)  
REQUIRED:  
WOMEN: 130 OCC. x 1/120 = 1.08 W.C.  
MEN: 130 OCC. x 1/150 = 0.87 W.C.  
LAV: 130 OCC. x 1/150 = 0.87 LAV (EACH)  
BUSINESS: 1 OCC. x 1/12 = 0.08 W.C.  
WOMEN: 4 OCC. x 1/125 = 0.03 W.C.  
MEN: 3 OCC. x 1/125 = 0.02 W.C.  
LAV: 1 PER 2 (EACH)  
STORAGE: 5 OCC. x 1/12 = 0.42 W.C.  
WOMEN: 3 OCC. x 1/120 = 0.025 W.C.  
MEN: 2 OCC. x 1/120 = 0.017 W.C.  
LAV: 5 OCC. x 1/120 = 0.042 LAV (EACH)  
TOTAL REQUIRED:  
WOMEN: 0.26 + 0.16 + 0.03 = 0.45 W.C.  
MEN: 0.26 + 0.12 + 0.02 = 0.40 W.C.  
LAV: 0.11 + (1 PER 2) = 0.25 LAV (EACH)  
ACTUAL PROVIDED:  
WOMEN: 2 WC + 2 LAV  
MEN: 1 WC, 1 URINAL + 2 LAV  
1 HOP SINK, 1 UTILITY SINK, AND 1 BI-LEVEL DRINKING FOUNTAIN  
BUILDING CODE: IBC 2018  
PLUMBING CODE: UPC 2018  
MECHANICAL CODE: IMC 2018  
ELECTRICAL CODE: NEC 2011  
FIRE CODE: IFC 2018  
FUEL GAS CODE: IFGC 2018  
ENERGY CODE: IECC 2018  
ACCESSIBILITY CODE: ICC A117.1 - 2009  
SOILS PREPARATION: SEE GEOTECHNICAL INVESTIGATION REPORT BY ALPINE GEOTECHNICAL 120 ROUND STONE DRIVE KALISPELL, MONTANA 59901 406.251.6478



2 SCHEMATIC FLOOR PLAN  
NOT TO SCALE

STATE OF MONTANA  
MICHAEL J. BURKE - SHERILL F. BURKE - JACK CLARK - JEFFREY WINKLER  
MEMBER OF THE AMERICAN INSTITUTE OF ARCHITECTS  
DRAWN BY: MICHAEL J. BURKE  
CHECKED BY: SHERILL F. BURKE  
DATE: 7-7-2021  
JOB NO.: 22108  
M.B.  
CITY: SUBMITTAL: 7-1-2021  
SHEET T1 OF 1  
HGFA ARCHITECTS - PLLC  
800 GRANITE TOWER, BILLINGS, MONTANA 59101 - PH (406) 248-7811 - FAX (406) 259-9278 - Email HGFA@hgfa.net